

EARLY LEARNING & FAMILY EDUCATION

Jordan Public Schools offers early childhood education and preschool opportunities for all families with children between the ages of birth to age five. We recognize that families provide children's first and most important learning environments, and parents are children's first and most significant teachers.

Our Early Childhood Family Education (ECFE) programs offer a variety of services and activities to bring families together to share the joys and challenges of parenthood while developing confidence in their own abilities. Our preschool programs ensure children enter kindergarten with the skills and behaviors necessary to be successful in future learning.

We have had a wonderful start to the school year with many families taking advantage of our program enhancements such as busing, curbside drop off, snack cart, and additional class offerings. Our staff continues to strengthen the school experience for students while improving educational practices in a collaborative model utilizing district staff development opportunities.

The Early Learning Services PTO continues to support our program, and we are very appreciative of their hard work. Most recently, we have enjoyed PTO's funding of our preschool field trips including Luceline Orchard, Emma Krumbes, and Pinwheel Play.

For general preschool or ECFE questions, please contact our ELS office at 952-492-3233.

Sincerely,

Jenna Wendorff
Director, Early Learning Services



EARLY LEARNING SERVICES STAFF

Early Learning Services Director
Jenna Wendorff

Community Ed/Rec Director
Steven Jensen

Kids' Co/Early Ed-Ventures Coordinator
Pam Going

ELS Administrative Assistant
Katie Anderson

Early Childhood Teachers
Trisha Hentges, Shelby Thiner, Megan Geis,
Katie Fisher

ECSE Teacher (3 to K)
Lauralie Axtell

Early Interventionist (birth to 3)
Rachel Vollbrecht

Parent Educator
Mary Hanek

Parent 
Aware

A Rating Tool for Selecting High Quality
Child Care and Early Education

Parent *Aware*
Rated Program



Highest Possible Rating

 **ONLINE**
jordan.k12.mn.us/els

 **PHONE**
952-492-3233

 **MAIL**
815 Sunset Drive
Jordan, MN 55323

  **SOCIAL MEDIA**
[@jordanmnel](https://www.facebook.com/jordanmnel)

EARLY LEARNING INTERVENTIONS

Did You Know?

The Jordan Public School believes that early education and interventions are the foundation of all learning. Along with our *Parent Aware Rated* preschool and ECSE

programs, **we also offer early intervention services to families with children birth to Kindergarten**, ensuring even our youngest are reaching their milestones and receive help *when extra help is needed*.



Birth to 3 Intervention

Our Early Intervention staff will provide a system of services that help babies and toddlers with developmental delays or disabilities. Based on the family needs and priorities, the school staff will help the family problem solve and give information and ideas of activities they can do to enhance play and daily routines. They also help to connect families with community resources and supports as needed.

For more call (952) 492-4212.

Age 3–6 Intervention

The **Early Childhood Special Education (ECSE) Preschool Program** provides learning experiences in all areas of development including social, self help, motor, communication, and cognitive skills. Children who have been identified with a developmental delay can benefit from many types of services within the ECSE classroom including speech, occupational, physical and vision therapies and assistive technology. ECSE services can also be provided in an inclusive setting within the regular preschool program offered in our Elementary School (Early Explorers Preschool).

For more call (952) 492-4285.

Preschool Screening

Has your three year old been screened?

The early childhood years from birth to the start of kindergarten are an important time of rapid learning and growth. Early Childhood Screening is a quick and simple check of how your child is growing and developing. Between the ages of 3 and 4, screening can detect possible health or learning concerns so that children can get help before they start school. Screening is required of all children in Minnesota prior to Kindergarten entrance.

See page 11 for dates and registration information.

For more call (952) 492-3233.

EARLY LEARNING



Help Me Grow

The Jordan Public School District is one of six districts who are served through the HELP ME GROW-SCOTT COUNTY early intervention system for children ages Birth through five. HELP ME GROW-SCOTT COUNTY focuses on child and family strengths, needs and priorities. We recognize that your family is the first and best teacher of your child and that children learn best through play. We work to enhance and support your family's knowledge as you help your child learn and develop throughout daily activities and routines.

This service is offered at no cost to the parent/care giver regardless of income or immigrant status and will provide information, support, and referral services to families of children with special needs. If you are concerned about your child's growth, development, or learning, please call 492-4285.

Is your child on track?

HelpMeGrowMN.org
1-866-693-4769

EARLY CHILDHOOD FUN FOR ALL!

Busy Babies

Ages 6 weeks to 12 months/walking

Come spend time with other parents and babies! Learn new songs, fingerplays, games, and some baby sign language! We will focus on a different theme for each session and you will leave equipped with many new ideas for your little one!

Fridays, Apr 17 - May 22; 11:15am – 12:15pm
\$35 /session, ECFE Classroom
Reg by Apr 13; Sibling Care: \$15 /session

Ones and Twos Together

Ages 12 to 36 months (must be walking)

Children and their parents are invited to spend time playing together while they learn. Each class will include learning stations, circle time, and a child-only class experience. During this time, children stay and play with the Licensed Early Childhood Teacher and assistant while parents go to meet with a Parent Educator to discuss topics helpful to this age group. Classes will also include informal parent discussion on topics suggested by parents during the first class.

Monday AM, Apr 6 - May 18; 8:30am - 10am
\$77 /session, ECFE Classroom
Reg by Mar 30; Sibling Care: \$21 /session

Play & Learn for Toddlers and their Grown Ups

Ages 1 and 2 years

Enjoy an hour of activities designed especially for your toddler's level of development! We'll do songs, art and interactive play to encourage language development and motor skills. There is no parent/child separation for this class.

Monday PM, Apr 6 - May 18; 5:45pm - 6:45pm
\$77, ECFE Classroom
Reg by Mar 30; *No sibling care available for PM class

Preschool with Training Wheels

Ages 3 to 5 years (Must turn 3 by February 1st, 2020 AND be fully potty trained)

This new class helps prepare your child for their future preschool classes, but still gives the parents an opportunity to connect! **Friday** will be a child-only class where you drop your child off for class and give them the chance to experience being a preschooler. **Monday** will be treated as a typical ECFE class; spending time with your child during the first half of class and then separate into a parent class with our Parent Educator for the second half. Join us in this new adventure and sign up for *Preschool with Training Wheels!*

Monday Apr 6 - Friday, May 22 (no April 10 and May 1);
10:30am - 12pm
\$132, ECFE Classroom
Reg by Mar 30; Sibling Care: \$3 child/ class





Little Canvas, Big Canvas

Ages 2 1/2 to 5 years

Join us to create a fun art project! We will assist you and your child with painting two pictures that you will definitely want to hang in your house! Come ready to paint and have fun!

Friday, Apr 17; 6pm - 7pm

\$15 /child and adult, JES Art Room

Reg by Apr 13

Let's Garden!

Come and Garden with Us!

Ages 2 1/2 to 5 years

Come join us as spring starts to bloom in Jordan! We will learn about how seeds turn into plants, how to take care of plants, and take home something extra special!! Be ready to bloom!

Friday, May 8; 6pm - 7pm

\$10 /child and adult, ECFE Classroom

Reg by May 4

FIND MORE FUN FOR THE LITTLES

in the Community Ed & Rec youth section!

Paw Patrol Art Camp *Ages 3-6*

PAGE 17 This is your invitation to help us tackle the big job of creating awesome Paw Patrol inspired art! We'll explore different techniques, styles, and materials to create art inspired by all of our favorite pups! **Learn more about this class and more on page 17!**

TLC Music Group *Ages Birth-5*

PAGE 21 Join music therapist Ms. Alicia in four weekly fun and upbeat music events for kids! Kids will sing, dance, and play instruments all while increasing developmental skills such as social, cognitive, and motor. **Learn more about this class on page 21!**

Sports Samplers *Ages 3-5*

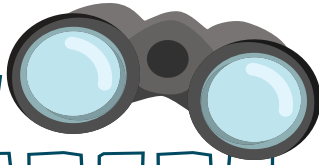
PAGE 22 A fun introduction to different sports including soccer, t-ball, basketball and track! Continue on for "Team Week" where kiddos experience team games designed to teach following directions. **Learn more about this class and more on page 22!**

Preschool Playtime *Ages Birth-5*

PAGE 22 Hey Kids, YOU RULE THE GYM! Kids, with a supervising adult are welcome to run around and play in the gym. Play equipment will be provided. **Learn more about this class and more on page 22!**

PRESCHOOL TIME TO EXPLORE!

EARLY EXPLORERS



Jordan Public Schools Preschool

Early Explorers, a Parent Aware 4-Star Rated Program, is a caring, warm and happy place for preschoolers to learn and grow. Our preschool offers an expanded traditional curriculum in a preK-4 setting. This means learning beyond the traditional preschool room! To prepare for Kindergarten and beyond, **your child will be oriented to the amenities of**

our elementary school - art, music, gym, media center, outdoor STEAM exploration, and a hot lunch option for full-day preschool.

Early Explorers activities include circle time, art, music and movement, story time, stations, a library day and a snack. We have a literacy-based curriculum that incorporates the SMART room, iPad Small Group Time, Handwriting without Tears and SMART board activities, meeting State Indicators of Progress, Kindergarten Readiness, and field trips through the year. Personal and social wellness is nurtured through the Pyramid Model – a positive intervention strategy supporting social-emotional well being of child. Our inclusive classrooms recognize the diversity of students, enabling all students to access the curriculum, fully participate in learning activities and demonstrate their knowledge and strengths at assessment.

Registration fee \$70

Online Registration for 2020-2021 begins Tuesday, March 3, 2020!

www.bit.ly/preschool_reg

PLAN YOUR 2020-2021 REGISTRATION!

2020-2021 FULL-DAY PRESCHOOL:

Age 4 and 5 (Turning 5 year during 2020-2021 school year)

Mon/Wed/Fri 8:30am – 2:30pm / \$323 month

Mon/Wed 8:30am – 2:30pm / \$215 month

Tues/Thurs 8:30am – 2:30pm / \$215 month

2020-2021 HALF-DAY PRESCHOOL:

Age 4 and 5 (Turning 5 year during 2020-2021 school year)

Mon – Thurs 12:00pm – 3:00pm / \$215 month

Age 3 and 4 (Turning 4 year during 2020-2021 school year)

Mon/Wed/Fri 8:30am – 11:00am / \$165 month **NEW TIME!**

Tues/Thurs 8:30am – 11:00am / \$115 month **NEW TIME!**



WE HAVE A PRESCHOOL BUSING OPTION FOR A SMALL FEE!

IS BEFORE OR AFTER PRESCHOOL CARE AN ISSUE?

Are you looking for wrap around care for your preschool child?

Take advantage of our in-house extended daycare program!

Early Ed-Ventures is a program designed to provide a safe and positive environment in cooperation with Early Explorers Preschool.

To enroll in Early Ed-Ventures, your student must be enrolled in preschool.



WRAP-AROUND EXTENDED DAYCARE

IS BEFORE OR AFTER PRESCHOOL CARE AN ISSUE?



EARLY LEARNING



EARLY ED-VENTURES

Jordan Public Schools

Preschool Extended Care

Early Ed-Ventures is a *wrap-around in-house daycare program* designed to provide a safe and positive environment in cooperation with Early Explorers Preschool.

Early Ed-Ventures is housed at the Jordan Elementary School. Early Ed-Ventures has planned activities designed to meet each child's physical, emotional, social and developmental needs. This is a great option for families that wish to have extended care or have difficulty with transportation before or after preschool. **To enroll in Early Ed-Ventures, your student must be enrolled in Early Explorers preschool.**

Early Ed-Ventures FEES:

Non-refundable registration fee of \$50 per year

Full Day: \$37

VISIT our website for more:

jordan.k12.mn.us/earlyedventures

To enroll for the 2020-2021 school year, please call (952) 492-4261 for a registration packet.

EARLY LEARNING PARENT ORGANIZATION

Early Learning Services PTO

When are the meetings?

- The PTO (Parent Teacher Organization) meets the **first Tuesday of every month at 6:15pm in the ELS parent room**. Meetings are open to anyone with a child in the ELS program; contact ELS at (952)492-3233 with questions.

What is the ELS PTO Advisory Council?

- This group is dedicated to supporting the students and staff at ELS. We are a group of parents that volunteer to enhance the student's educational experience with time, effort, concern, and funds. We are always looking for parents who would like to volunteer.
- The funds we raise are used to provide field trips, support ELS programming, purchase supplies and equipment, and offer events for the families in the program.

Why should you join?

- You can take an active part in your child's education.
- It is a great way to meet new friends and other parents.
- You can give back by offering your time and talents.



*Winter 2020 ELS-PTO
Luau Dance Party!
So much fun!*

@ EMAIL
jordanelsppto@gmail.com

f SOCIAL MEDIA
@jordanelsppto

Our PTO Members

Danielle Tieben - President
Amanda Franklin - Treasurer
Rebecca Consoer - Secretary
Daedra Ahlbrecht
Bethany Doepke
Samantha Friendshuh

Thao Habeck
Becky Knight
Katie Koepp
Angie Lederle
Marie Wignall
Bridget Wolf

PTO
BABY SHOWER

Friday
April 3, 2020
11:15am - 12:15pm
ECFE Classroom
FREE



If you have added a NEW BABY to your family in the last six months the Early Learning Services PTO wants to celebrate with you! **Join us for a FREE Baby Shower where you can talk to other parents, enjoy a light lunch, and laugh, sing, and smile as you experience a circle time with your baby.** This is a great opportunity to get a glimpse into the ECCE Busy Babies Class (Fridays April 17th through May 22nd from 9:15am-10:15am). We look forward to meeting the newest members of the Jordan Community!
FREE SIBLING CARE AVAILABLE!

SCHOLARSHIPS, SIB CARE, & SCREENING

Scholarships Available Sliding Fee Scale

Fees help cover the costs for each class. No family will be turned away due to inability to pay. Reduced rates and scholarships are available. Call (952) 492-3233 for information on scholarships or reduced fees. If your income is less than these guidelines, you are eligible for waived or reduced fees.

Annual Income					
House Size	Under 15K	15-25K	25-45K	45-85K	85K
2-3	1/2	3/4	Full	Full	Full
4-5	1/4	1/2	3/4	Full	Full
6-7	\$30	1/4	1/2	3/4	Full
8+	\$10	\$30	1/4	1/2	3/4

La ayuda de honorarios cubre los gastos para cada clase. Ninguna familia será girada lejos debido a la inhabilidad de pagar. Los precios reducidos y las becas están disponibles. **Llame (952) 492-3233 para la información en becas o honorarios reducidos.** Si sus ingresos son menos que estas pautas, usted es elegible para honorarios renunciados o reducidos.

Ingreso Anual					
En Casa	Bajo 15 Mil	15-25 Mil	25-45 Mil	45-85 Mil	85 Mil
2-3	50%	75%	100%	100%	100%
4-5	25%	50%	75%	100%	100%
6-7	\$30	25%	50%	75%	100%
8+	\$10	\$30	25%	50%	75%

Sibling Care Policy

No older or younger siblings are to be in the classroom during class time. ECFE offers sibling care for brothers and sisters ages birth to Kindergarten of registered children.

Sibling Care Cost per Weeks: \$3 per session

Reminders:

- Drop in care must be called in before class and is not guaranteed available.
- All siblings must also have a current immunization record on file.
- Sibling care is not available for evening classes.

EARLY CHILDHOOD SCREENING



Has your 3 year old been screened? The early childhood years from birth to the start of kindergarten are an important time of rapid learning and growth. Early Childhood Screening is a quick and simple check of how your child is growing and developing. Between the ages of 3 and 4, screening can detect possible health or learning concerns so that children can get help before they start school. Screening is required of all children in Minnesota prior to Kindergarten entrance. The earlier the better! Early Childhood Screening is not a Kindergarten readiness test or IQ test. Waiting until your child is 4 or 5 to screen may be too long.

Todos los niños entre las edades de 3-5 tienen que pasar por la investigación preescolar (preschool screening) requerido por el estado de Minnesota.

Visit our website for info:
jordan.k12.mn.us/screening

SCREENING DATES

Friday, April 17
Friday, May 8

REGISTRATION PAYMENTS & REMINDERS

Register & Pay Online

Jordan Community Ed & Rec uses a class registration and payment system called ACTIVE Net. As a part of the Community Ed & Rec, all Early Learning Services programming to include ECFE and preschool will now use this system for registration and payment.

How to sign up for a Community Ed & Rec ACTIVE Net account?

1. Go to www.jordan.k12.mn.us
2. Under "Community Ed & Rec", choose "Class Registration & Payment"
3. Choose "Sign Up" (blue button)

How to sign up for Community Ed & Rec classes using ACTIVE Net?

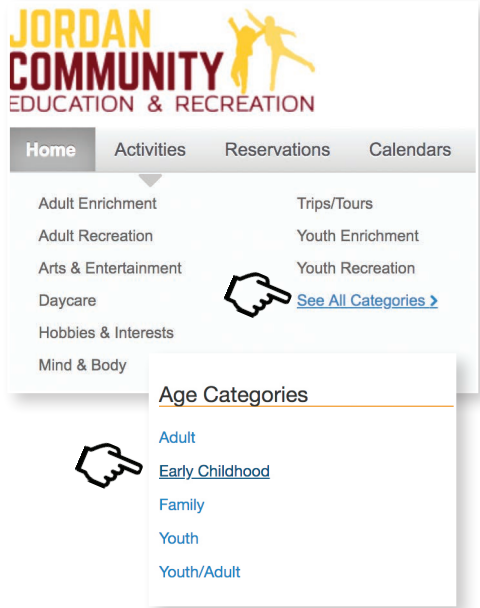
1. Go to www.jordan.k12.mn.us
2. Under "Community Ed & Rec", choose "Class Registration & Payment"
3. Log into your account
4. Choose from "Activities" along top grey bar
5. Select "See All Categories" (see picture)
6. Select "Early Childhood" under age categories (see picture)

ACTIVE Net on Smartphone!

Look for the ACTIVE Net icon on the updated "Jordan Public Schools" smartphone app. Quick access to paying on your smartphone when needed!



ACTIVE Net on the web!



Reminder:

A **\$20.00 administrative fee** will be charged for withdrawing from a class. Refunds for classes or special events must be requested 5 working days prior to the start of class or event. No refunds will be granted after this date. Please register at least one week prior to the start of class or special event.

ECFE Location:

ECFE classes are held in the Jordan Early Learning Services wing at the Jordan Elementary School. The classrooms are located in the south-west corner of the building. Park on the south-west side, and enter through the main doors, turning right after entering the building.

Please Note:

- Phone registrations will be guaranteed only after payment has been received.
- Please notify our office of cancellations at least 3 working days prior to first class meeting in order to receive a refund. No refunds are given for missed classes. No refunds on either special events or classes will be given after registration deadlines unless an event has been cancelled. **A \$20.00 administrative fee will be charged for withdrawing from a class.**
- Classes are filled on a first-come, first-serve basis. In order to hold a class, a minimum of five families must be registered. **You ARE registered unless notified otherwise.**
- Jordan ELS **requires all students to have a current birth certificate, immunizations, photo release, and state enrollment forms on record.** These forms must be on record before the second class in a series.